



ALISE 2007 Annual Conference
Monday, January 15 — Thursday, January 18, 2007

*Habits of Mind and Practice:
Preparing Reflective
Professionals*



Message from ALISE President John Budd

Welcome to the ALISE Annual Conference and to Seattle. This has been a busy year and I hope you'll find this year's event to be an excellent conference. We'll be starting off with a bang; don't miss William Sullivan's keynote presentation, "The Civic Life of Information: Teaching Professionalism for the Knowledge Age." For many reasons this emphasis on the profession and professionalism is timely (not the least being the charge to the ALA Committee on Education to revisit the Standards for Accreditation). Michele Besant and Melissa Gross and everyone on the Conference Program Planning Committee have done a tremendous job; the papers and presentations clearly demonstrate the thoughtfulness and creativity of ALISE members. With recent happenings, including the release of the report of the Commission on the Future of Higher Education (convened by U.S. Secretary of Education Margaret Spellings), ever greater attention is focused on teaching and learning at all levels. This is the time, and Seattle is the place to engage colleagues in conversation about ways we can thrive—individually and collectively—within the changing world of higher education.

Message from the Conference Program Planning Committee

Welcome to ALISE 2007. We were excited by the strong response to calls and we are very glad you are with us in Seattle. Thank you for your active participation to make this conference happen!

We are pleased that William Sullivan is speaking to us in the Opening Session and staying to participate with us in the Wednesday plenary organized by the Task Force on Best Teaching Practices and the Teaching Methods SIG. We are also very pleased that LIS educator Loriene Roy, ALA President-Elect, along with members of her task force will do a third plenary on Thursday: "Supporting LIS Education through Practice."

Further, we are very pleased that you have made it possible for us to offer a great diversity of quality papers, panels and posters. We wish our schedule had fewer conflicts so all of us could attend more of what promise to be excellent sessions. We ask you to trust that there are only good choices. We know ALISE annual is a whirlwind of interviews for many, both job seekers and search committees. We hope this part of the conference is also engaging and serves you well.

We would like to thank everyone on this year's planning committee. Many people gave much time to pull things together. Truly, thank you. We also want to acknowledge a debt of gratitude to last year's committee, especially Connie Van Fleet, for taking seriously the charge of documenting ALISE conference planning procedure and giving us an excellent tool. We all have a charge to keep this a living document. This is your conference—our conference. We all make it happen. To this end, think about what you want out of ALISE annual and how you can make it an even better conference in the future.

Some people claim no one reads these welcome messages. Obviously if you are reading this, they are wrong. What kinds of "common knowledge" do we bring to our research and teaching? May we all leave with better sense. And what related to your work gets you up in the morning? What is so exciting and fun about your research or teaching that you love to share it? Question it? Challenge it? May we all leave with good ideas and re-energized souls.

Welcome to Seattle. Let's have fun examining our Habits of Mind and Practice and How We Prepare Reflective Practitioners. Have a great conference.

General Information

Registration/ Materials

Registration will be open throughout the meeting outside the Chatham room.

Registration hours:

Monday 8:00 a.m. - 6:00 p.m.

Tuesday 8:00 a.m. - 7:00 p.m.

Wednesday 8:00 a.m. - 7:00 p.m.

Thursday 8:00 a.m. - Noon

NOTE: Attendees must wear name badges for entrance to all conference events, including receptions.

Exhibits

Exhibits are located in the Portland Room.

Times: Tuesday 8:00 a.m. to 5:00 p.m.

Wednesday 8:00 a.m. to 5:00 p.m.

Thursday 8:00 a.m. to 12:00 noon

Cancellation Policy

All cancellations must be submitted in writing and faxed to the ALISE Executive Director at 312-419-8950. Cancellations received before 11:59 p.m. on December 15, 2006 are subject to a \$50 fee. After December 15, 2006, ALISE will give refunds only for documented medical emergencies. Refunds will be processed within 6 weeks after the meeting.

Resolutions (see page 17)

Message Center/Lost and Found

A message center, and lost and found check point will both be located in the registration area.

Conference Evaluation

The information that you provide on your conference evaluation will be critical to our improvements for future meetings. Please be sure to complete an evaluation and leave it at the registration desk or mail it to the ALISE office: 65 East Wacker Place, Suite 1900, Chicago, IL 60601-7246.

Placement Service

Arrangements for interviews should be made directly between candidates and recruiters using the Placement Service message board in the registration area. Please check the board often. When you have made your appointments, check at the registration desk to verify your interview room.

Grand Hyatt Seattle Hotel

721 Pine Street, Seattle, Washington, 98101

Phone: 206-774-1234 Fax: 206-774-6120

<http://grandseattle.hyatt.com/>

In Memoriam

confirmed as of January 5, 2007

Frederick G. Kilgour

Anne Y. McConnell

Eleanor Moore

Kenneth R. Shaffer

Patrick Williams

2008 Call for Proposals

OCLC and ALISE seek applicants for research grants. The OCLC/ALISE Library and Information Science Research Grant program awards up to \$15,000 to foster quality research by faculty in schools of library and information science. Projects should be completed within one year, and the findings published in the public domain. Application materials are available on the OCLC web site, at www.oclc.org/research/grants/.

Submission deadline for the 2008 awards is September 17, 2007.

For more information contact
The OCLC Office of Programs and
Research ResearchWeb@oclc.org

Explore the Attractions of Seattle

Seattle is anything but ordinary. It's a place where bike messengers share elevators with world-renowned researchers. Where fishermen have lunch alongside top surgeons. It's a city where the extraordinary is commonplace and commonplace is anything but. And if you look closely, you just might discover that in Seattle there are amazing things happening all around you.

The Space Needle

A 41-second elevator ride takes you up 520 feet to the observation deck of the Space Needle, built for the 1962 World's Fair. Enjoy a meal at SkyCity, the restaurant at the top that revolves 360° while you dine.

www.spaceneedle.com

Pike Place Market

Born in 1907, Seattle's Pike Place Market is the granddaddy of farmers' markets. Today, it's a major tourist attraction with 200 businesses operating year-round, 190 crafts people and 120 farmer booths - plus street performers and musicians.

www.pikeplacemarket.org

Ferries

Traveling by ferry is a state of mind as much as a means of transportation to some of the Puget Sound's most historic and scenic sites. Views of the Olympic and Cascade mountains, the Seattle cityscape and the green shorelines will draw you out onto the deck to feel the salt breeze on your face.

www.wsdot.wa.gov/ferries

Seattle Aquarium

Meet Alki, the sea otter pup born at the Aquarium. Walk under the water in a glass dome as bluntnose sixgill sharks and other Elliott Bay creatures swim all around you.

www.seattleaquarium.org

The Seattle Waterfront

A bustling collection of attractions, restaurants and shopping, as well as starting points for ferries, cruise ships, the Victoria Clipper and Argosy boat tours are located here.

www.ci.seattle.wa.us/tour/water.htm

Woodland Park Zoo

See more than 1,000 animals of 300 different species, from elephants and gorillas to piranhas and penguins, in naturalistic exhibits at the Woodland Park Zoo.

www.zoo.org

Bill Speidel's Underground Tour

After the Great Seattle Fire of 1889, the city was rebuilt over the top of the ruins. This guided tour takes visitors through the hidden subterranean passages that once were the main roadways and storefronts of old downtown Seattle and tells stories of the frontier people who lived and worked there.

www.undergroundtour.com

The Seattle Public Library

Designed by world-renowned Dutch architect Rem Koolhaas, the award-winning glass and steel structure of the new Central Library makes the building seem a little off-kilter and translucent - allowing passersby on the street to look in.

www.spl.org

Tillicum Village

A short, narrated cruise takes you to an island village, where you'll feast on salmon cooked in the authentic Native American way. A stage show of traditional dances and stories entertains and teaches you about the people who lived in the Northwest first.

www.tillicumvillage.com

Spirit of Washington Dinner Train

Passenger train travel is reborn on this excursion from Renton to Woodinville in vintage rail cars. The train travels along the shores of Lake Washington and over a historic trestle as you dine in style.

www.spiritofwashingtondinnertrain.com

Conference at a Glance

Monday

- 8:00 a.m. - Registration
Chatham
- 8:00 a.m. - Placement Services
Chatham
- 8:30 a.m. - Council of Deans/Directors
Stevens
- 1:30 p.m. - Best Practices for Online Pedagogy
Workshop Leonesa I
- 4:30 p.m. - Vita and Portfolio Review
Leonesa II
- 2:00 p.m. - ALISE Board Meeting 2
Douglas Boardroom
- 5:00 p.m. - ALISE Committee Meetings
Leonesa III
- 6:00 p.m. - Opening Reception/Works-in-
Progress Poster Session
Princessa Ballroom

Tuesday

- 7:30 a.m. - First Timers' Breakfast
Princessa II
- 8:30 a.m. - Registration
Chatham
- 8:00 a.m. - Placement Services
Chatham
- 8:00 p.m. - Exhibits
Portland
- 8:30 a.m. - Opening Session
Leonesa Ballroom
- 10:00 a.m. - Morning Break
Leonesa Foyer
- 10:30 a.m. - Session 1: Panels and Papers
- 12:00 noon - 1.1 Discussion with William Sullivan.
Eliza Anderson Amphitheater
- 1.2 Juried Papers 1: *Reflections on Virtual Reference.* Leonesa II
- 1.3 ALISE Awards Panel. Menzies Suite
- 1.4 *Shaping Outcomes: Design, Development and Dissemination of Online Modules for Planning and Evaluation Education.* Leonesa I
- 1.5 Juried Papers 2: *Contemplating the K-12 World.* Leonesa III
- 12:00 noon-2:00 p.m. - Lunch on your own
- 12:30 p.m. - Birds of a Feather
Princessa II
- 2:00 p.m. - Session 2: Panels and Papers
- 2:1 Juried Papers 3: *Learning & Living through Virtual Class Worlds.* Eliza Anderson Amphitheater
- 2.2 *An Action Driven Panel/Round Table Discussion of Information and Professional Ethics.* Information Ethics SIG. Leonesa II
- 2.3 *Reflections on Three Leading Library Historians.* Historical Perspectives SIG. Menzies Suite
- 2.4 Juried Papers 4: *When Users are Readers and What's Sex Got to do With It?* Leonesa I
- 2.5 Juried Papers 5: *Meeting the Niche Needs.* Leonesa III
- 3:30 p.m. - Afternoon Break
Leonesa Foyer

- 4:00 p.m. - Session 3: Panels and Papers
- 5:30 p.m. - 3.1 *Information Seeking Behaviors - The Who, What, Where, When, How And Why: Habits of Practice of K-12 Educators and Learners.* Eliza Anderson Amphitheater
- 3.2 *From Dissertation to Publication: Advice from The University of Washington Press.* New Faculty SIG. Leonesa II
- 3.3 *Chat Reference Evaluation: Towards Habits of Reflective Practice.* Menzies Suite
- 3.4 Juried Papers 6: *Education, Practice & Identity in Context(s).* Leonesa I
- 3.5 *From Advanced Degree Holders to Subject Specialists: Rethinking LIS Education for New Professionals.* Leonesa III
- 5:45 p.m. - Past Presidents' Reception
(invitation only) Vesuvio Suite
- 7:00 p.m. - Doctoral Poster Session Setup
Princessa II
- 6:15 p.m. - Doctoral Poster Judges Meeting
Douglas Boardroom
- 6:15 p.m. - Doctoral Poster Judging
Princessa II
- 8:15 p.m. - Doctoral Student Reception
Princessa Ballroom

Wednesday

- 7:30 a.m. - School Representatives' Breakfast
Princessa II
- 8:30 a.m. - Registration
Chatham
- 8:00 a.m. - Placement Services
Chatham
- 8:00 p.m. - Exhibits
Portland
- 5:00 p.m. - SIG Session 1
Princessa I
- 9:00 a.m. - Plenary 2: *Reflecting on LIS and William Sullivan's Three Apprenticeships in Professional Education.* Leonesa Ballroom
- 10:15 a.m. - Morning Break
Leonesa Foyer
- 10:45 a.m. - Session 4: Panels and Papers
- 12:15 p.m. - 4.1 *WISE Model of Collaboration: Improve Access, Increase Quality, Diversify Course Offerings.* Eliza Anderson Amphitheater
- 4.2 *Optimizing Teaching Experiences Abroad.* International Education SIG. Leonesa II
- 4.3 Juried Papers 7: *Tools & Techniques for Reflective Learning.* Menzies Suite
- 4.4 *Gender Issues in Information Needs and Services.* Gender SIG. Leonesa I
- 4.5 *The Next Generation of Instruction Librarians: Academic Libraries and the Teacher Training Experience.* Leonesa III
- 12:15 p.m. - Lunch on your own
1:30 p.m.

- 12:30 p.m. - SIG Session 2
Princessa II
- 1:15 p.m. - Session 5: Panels and Papers
- 5.1 *Talking Online Education: Delivering a Synchronous SLIS Program in a Two-Way VoIP Context.* Eliza Anderson Amphitheater
- 5.2 Juried Papers 8: *Balance in the Curriculum?* Leonesa II
- 5.3 *Undergraduate Programs in LIS Schools: Reflections, Challenges & Opportunities.* Menzies Suite
- 5.4 *Recruiting and Educating the Next Generation of Youth Services Faculty.* Youth Services SIG. Leonesa I
- 5.5 *Preparing Reflective Professionals: Systemizing the Proof, a Panel Discussion.* Leonesa III
- 3:00 p.m. - Afternoon Break
Leonesa Foyer
- 3:30 p.m. - ALISE Business Meeting
Leonesa Ballroom
- 5:15 p.m. - Awards Reception
Princessa Ballroom
- 6:30 p.m. - Awards Reception
Princessa Ballroom

Thursday

- 8:00 a.m. - Registration
Chatham
- 12:00 noon - Placement Services
Chatham
- 8:00 a.m. - Exhibits
Portland
- 12:00 noon - SIG Session 3
Princessa I
- 8:45 a.m. - Assistant/Associate Deans SIG
Leonesa Ballroom
- 9:00 a.m. - *Supporting LIS Education Through Practice.* Leonesa Ballroom
- 10:15 a.m. - Session 6: Panels and Papers
- 10:30 a.m. - 6.1 *Interdisciplinary and Multidisciplinary Research: Enhancing Diversity in LIS Scholarship.* Research Methods SIG. Eliza Anderson Amphitheater
- 6.2 OCLC/ALISE Grant papers.
Leonesa II
- 6.3 *Now I have the Assistant Professor position: What are the expectations while working towards tenure?* Doctoral SIG. Menzies Suite
- 6.4 *Three perspectives on the importance of reflection in the classroom and beyond.* Leonesa I
- 6.5 Juried Papers 9: *We Recruit!* Leonesa III
- 11:00 p.m. - All Deans', Directors', and Chairs' Meeting with Office for Accreditation Staff. Princessa II
- 12:00 noon - Closing Session
Leonesa Ballroom
- 1:00 p.m. - New Deans', Directors', and Chairs' Meeting with Office for Accreditation Staff. Princessa II
- 2:00 p.m. - JELIS Editorial Board Meeting
Blewett Suite
- 3:00 p.m. - ALISE Board w/Chairs & Conveners
Stevens Suite
- 2:00 p.m. - ALISE Board Meeting
Douglas Boardroom
- 3:30 p.m. - ALISE Board Meeting
Douglas Boardroom
- 6:30 p.m.

Monday, January 15

MONDAY OVERVIEW

- 8:00 a.m. – Registration
6:00 p.m. *Chatham*
- 8:00 a.m. – Placement Services
8:00 p.m. *Chatham*
- 8:30 a.m. – Deans and Directors Workshop
1:30 p.m. *Stevens*
- 12:30 p.m. – Online Pedagogy Workshop
4:30 p.m. *Leonesa I*
- 1:00 p.m. – Vita and Portfolio Review
4:00 p.m. *Leonesa II*
- 2:00 p.m. – ALISE Board of Directors
5:00 p.m. Meeting 2 *Douglas Boardroom*
- 4:30 p.m. – ALISE 2006 and 2007
5:30 p.m. Committee Meetings *Leonesa III*
- 6:00 p.m. – WiP Poster Session and Opening
7:00 p.m. Reception *Princessa Ballroom*

8:30 – 1:30 *Stevens***Deans and Directors Workshop**

Organizer: **Andrew Dillion**, University of Texas at Austin.
Morning break courtesy of Texas/lunch courtesy of British Columbia and Toronto.

12:30 – 4:30 *Leonesa I*

Best Practices for Online Pedagogy: Preparing WISE Scholars Workshop WISE (Web-based Information Science Education) Consortium and Distance Education SIG

Moderator: **Linda Smith**, University of Illinois at Urbana-Champaign

Open to anyone attending ALISE, this participatory workshop explores best practices, involving presenters with experience in a variety of online teaching environments. In addition to contributing to discussion during the panel sessions, participants will have the opportunity to join breakout groups to identify needs for continuing professional development in online pedagogy that the WISE Consortium should address through the WISE Scholars program, to be initiated with grant support from the Institute of Museum and Library Services.

Factors Contributing to Quality Online Education

Bruce Kingma, Syracuse University

Linda C. Smith, University of Illinois at Urbana-Champaign

Strategies for Community Building

Michelle Kazmer, The Florida State University

Rae-Anne Montague, University of Illinois at Urbana-Champaign

Scott Nicholson, Syracuse University

Using Technology Effectively

Chip Bruce, University of Illinois at Urbana-Champaign

Lorri Mon, The Florida State University

Stuart Sutton, University of Washington

Developing WISE Scholars-Faculty Development in Online Pedagogy (Breakout Groups)

1:00 – 4:00 *Leonesa II***Vita and Portfolio Review**

Polish your professional presentation. Senior faculty will review and critique curriculum vitae and portfolios in one-on-one 30 minute review sessions. Advance registered participants will receive preference.

2:00 *Stevens***Spectrum Doctoral Fellowship Meeting**2:00 – 5:00 *Douglas Boardroom***ALISE Board of Directors Meeting 2**4:30 – 5:30 *Leonesa III***ALISE 2006 and 2007 Committee Meetings**5:30 – 6:00 *Princessa Ballroom***Works-in-Progress Poster Session set-up**6:00 – 7:00 *Princessa Ballroom*

Opening Reception and Work-in-Progress Poster Session (cash bar)

The Works in Progress session, with more than 50 posters from faculty, doctoral students, and academic librarians, presents research in its formative stages and provides an opportunity for presenters and conference attendees to exchange ideas in an informal setting.

Tuesday, January 16

TUESDAY OVERVIEW

- 7:30 a.m. – First Timers' Breakfast
8:30 a.m. *Princessa II*
- 8:00 a.m. – Registration
7:00 p.m. *Chatham*
- 8:00 a.m. – Placement Services
8:00 p.m. *Chatham*
- 8:00 a.m. – Exhibits
5:00 p.m. *Portland*
- 8:30 a.m. – Opening Session
10:00 a.m. *Leonesa Ballroom*
- 10:00 a.m. – Morning Break
10:30 a.m. *Leonesa Foyer*
- 10:30 a.m. – SESSION 1: Concurrent
12:00 p.m. Programs & Juried Papers
- 12:00 noon – Lunch Break
2:00 p.m.
- 12:30 p.m. – Birds of a Feather
2:00 p.m. *Princessa II*
- 2:00 p.m. – SESSION 2: Concurrent
3:30 p.m. Programs & Juried Papers
- 3:30 p.m. – Afternoon Break
4:00 p.m. *Leonesa Foyer*
- 4:00 p.m. – SESSION 3: Concurrent
5:30 p.m. Programs & Juried Papers
- 5:45 p.m. – Past Presidents' Reception
7:00 p.m. (by invitation only) *Vesuvio Suite*
- 5:45 p.m. – Doctoral Poster Session Set Up
6:15 p.m. *Princessa II*
- 5:45 p.m. – Doctoral Poster Judges Meeting
6:15 p.m. *Douglas Boardroom*
- 6:15 p.m. – Doctoral Poster Judging
8:15 p.m. *Princessa II*
- 8:30 p.m. – Doctoral Student Research
10:00 p.m. Poster Session and Reception
(cash bar) *Princessa Ballroom*

7:30 – 8:30 *Princessa II*
First Timers' Breakfast

Host: ALISE President-Elect, **Connie Van Fleet**,
University of Oklahoma.
Learn about ALISE and how you can get involved.

8:30 – 10:00 *Leonesa Ballroom*
Opening Session

President's Welcome: ALISE President **John Budd**,
University of Missouri-Columbia

Keynote Address: *The Civic Life of Information:
Teaching Professionalism for the Knowledge Age*
William M. Sullivan, Carnegie Foundation for the
Advancement of Teaching

The future of library and information science as a profession may well hinge on how professionalism is understood and practiced. A civic professionalism for our time is aware of the reciprocal relationship between expanding information and the need for frameworks of meaning through which individuals and communities can interpret and use that information. Library and information specialists are members of a professional community committed to serve as mediators of public understanding and aspiration. The talk will focus on how to form in future professionals not only competence but strong identities centered on commitment to public purpose.

William M. Sullivan is Senior Scholar at the *Carnegie Foundation for the Advancement of Teaching* and has been Professor of Philosophy at La Salle University, where he is now Associate Faculty. He holds a Ph.D. in Philosophy from Fordham University. Sullivan co-directs the Foundation's project on the Preparation for the Professions. This is a multi-year study comparing professional education for law, engineering, the clergy, nursing, and medicine. One of the special concerns of the program is the relationship between professional education and the liberal arts. Sullivan has been an active researcher in the areas of political and social theory, the philosophy of the social sciences, ethics, the study of American society and values, the professions, and education. He is co-author of *Habits of the Heart* and *The Good Society*. He is author of *Reconstructing Public Philosophy* and, most recently, the Second Edition of *Work and Integrity: The Crisis and Promise of Professionalism in America*.

10:00 – 10:30 *Leonesa Foyer*
Morning break

10:00 – 2:00 *Douglas Boardroom*
Canadian Council of Information Science Meeting

10:30 – 12:00
**CONCURRENT SESSION 1:
PROGRAMS AND JURIED PAPERS**

1.1 *Eliza Anderson Amphitheater*
Informal Discussion with William Sullivan

Moderator: **John Budd**, University of Missouri-Columbia
In an interactive setting, William Sullivan will take questions from participants and elaborate on his keynote address.

Tuesday

1.2 *Leonesa II***Juried Papers 1: Reflections on Virtual Reference**

Moderator: **R. David Lankes**, Syracuse University
Seeing Ourselves through Users' Eyes: Reflections on Digital Reference Services

Discussion of qualitative research with digital reference users which resulted in chat software modifications, with implications for reflective professional practice in designing assessment questions, software features, and question intake interfaces.

Lorri Mon, The Florida State University

Virtual Reference Services Education in LIS Curricula: Lessons from VRS Reflective Practitioners

Findings from three research studies of librarian providers of VRS in different information environments that define the knowledge and skills necessary for VRS education of LIS students and practitioners.

Feili Tu, The University of South Carolina

Nancy P. Zimmerman, The University of South Carolina

Reflections of Reference Practice: Analyzing Virtual Reference Transcripts

This IMLS, Rutgers, and OCLC supported study reports results of analysis of 600+ virtual reference transcripts by: Type and Subject of Query; Geographical Distribution; Session Duration; and Interpersonal Communication aspects.

Marie L. Radford, Rutgers, The State University of New Jersey

Lynn Silipigni Connaway, OCLC Online Computer Library Center, Inc.

1.3 *Menzies Suite***ALISE Awards Panel: Dissertation & Grant Winners**

Moderator: **Lynne McKechnie**, University of Western Ontario.

ALISE Research Grant Competition

Remote Reference in Practice and the Classroom

Eileen Abels, University of Maryland, **Denise Agosto** Drexel University, and **Lorri Mon**, Florida State University

Bohdan S. Wynar / ALISE Research Paper Competition

Recent Library Practitioner Research: A Methodological Analysis and Critique.

Charles Hildreth, Long Island University and **Selena Aytac**, Long Island University

Dialog / ALISE Methodology Paper Competition

E-mail interviewing in qualitative research: A methodological discussion.

Lokman Meho, Indiana University

Eugene Garfield / ALISE Dissertation Competition

Social networks, social capital, and the use of information and communications technology in socially excluded communities: A study of community groups in Manchester, England

Kate Williams, Dominican University (Dissertation completed at Michigan)

1.4 *Leonesa I***Shaping Outcomes: Design, Development and Dissemination of Online Modules for Planning and Evaluation Education**

Convener: **Danny Callison**, Indiana University Purdue University-Indianapolis

An IMLS-funded project at Indiana University's Indianapolis campus has resulted in a new online tutorial to enhance training in outcomes-based planning and evaluation. This presentation provides an overview of the module developments and how they might be used in graduate library management education.

Panelists:

Elizabeth Kryder-Reid, Indiana University Purdue University-Indianapolis

Rachel Applegate, Indiana University Purdue University-Indianapolis

Daniel Callison, Indiana University Purdue University-Indianapolis

Annette Lamb, Indiana University Purdue University-Indianapolis

Katherine Schilling, Indiana University Purdue University-Indianapolis

Carol Tilley, Indiana University Purdue University-Indianapolis

1.5 *Leonesa III***Juried Papers 2: Contemplating the K-12 World**

Moderator: **Sharon McQueen**, University of Kentucky
Rethinking Information Literacy Learning

Environments: Illuminating Critical Points of Concern and Expanding Possibilities for Information Educators

This study compares two K-12 information literacy learning approaches: 1) an Integrated Approach and 2) an Immersive Approach. Repeated measures, student interviews and an activity theory framework are employed within this comparative study.

Terrance S. Newell, The Florida State University

Preparing Reflective School Library Media Specialists using the National Board for Professional Teaching Standards

These research results reveal how students can gain the skills to become reflective practitioners within LIS courses that employ the National Board for Professional Teaching Standards' emphasis on professional reflection.

Nancy Everhart, The Florida State University

Eliza T. Dresang, The Florida State University

Stories We Tell: Culture, Race, and Youth Services in the LIS Curriculum

The presenters will share the conceptual framework and student learning outcomes for an issues-based children's and young adult literature seminar that focused on supporting children in multicultural settings.

Kafi Kumasi-Johnson, *Indiana University*

Robin Moeller, *Indiana University*

Noon – 2:00

Lunch break

12:30 – 2:00 *Princessa II*

Birds of a Feather

Organizer: **Stephen Bajjaly**, The University of South Carolina

Meet fellow conferees who share your teaching subject interests for informal, roundtable discussions about course content, teaching techniques, learning activities, and best practices. Attend looking for advice or offering knowledge and experiences. Discover contacts for the rest of the conference and beyond. Feel free to bring a brown bag lunch if you wish. Lunch options will be available for purchase at this session.

Moderators:

- Administration and Management, **Tim Sineath**, University of Kentucky
- Cataloging, Classification, and Metadata, **Elaine Yontz**, Valdosta State
- Children's/YA Services, **Eliza Dresang**, The Florida State University
- Collection Development, **Bob Holley**, Wayne State University
- Community Informatics, **Chip Bruce**, University of Illinois at Urbana-Champaign
- Foundations of LIS, **Julie Hersberger**, University of North Carolina-Greensboro
- Information Access Services, **Eileen Abels**, University of Maryland
- Information Systems and Technologies, **Mike Eisenberg**, University of Washington
- Internships, **Loriene Roy**, University of Texas at Austin
- Public Libraries, **Doug Raber**, University of Missouri-Columbia
- Research Methods, **Ann Curry**, University of British Columbia
- Service Learning, **Jim Elmborg**, University of Iowa
- Social Media Use, **Steven MacCall**, University of Alabama
- Special Libraries/Information Centers, **Judy Marley**, The University of South Carolina
- Three Apprenticeships, **Jean Preer**, Indiana University-Indianapolis

2:00 – 3:30

CONCURRENT SESSION 2: PROGRAMS AND JURIED PAPERS

2.1 *Eliza Anderson Amphitheater*

Juried Papers 3: Learning & Living through Virtual Class Worlds

Moderator: **Stephen Bajjaly**, The University of South Carolina

Applying Experiential Learning Theory in Distance Education: A Case Study

Media-rich course content enables students to access course lectures live or on demand from remote locations. This project evaluates how Experiential Learning Theory may be applied in LIS distance education.

Yunfei Du, Wayne State University

John Heinrichs, Wayne State University

Hermína Anghelescu, Wayne State University

Jan Utz, Wayne State University

Professional Contributions and Communications of Graduates of Online LIS Programs

This study identifies strengths and weaknesses of LIS distance graduates in professional networking, contributions, and communication by reporting on questionnaire data collected from sixty graduates of two online LIS programs.

Michelle M. Kazmer, The Florida State University

Denise Brown, The Florida State University

Promoting Reflection through Action Learning in a 3D Virtual World

Presenters will discuss how the pedagogy of Action Learning coupled with a 3D virtual learning environment immerses students in social constructivist learning spaces that incorporate and support reflection and interaction.

Robert L. Sanders, Appalachian State University

Lindy McKeown, University of Southern Queensland.

2.2 *Leonesa II*

An Action Driven Panel/Round Table Discussion of Information and Professional Ethics Information Ethics SIG

Convener: **Toni Samek**, University of Alberta

This panel continues examination of intellectual and curricular approaches to ethics in LIS education and seeks input from concerned professionals as to fruitful avenues for exploration, curricular development, and research.

Panelists:

- Critical librarianship, human rights, and information ethics, **Toni Samek**, University of Alberta
- Social justice and information ethics, **Johannes Britz**, University of Wisconsin-Milwaukee
- Teaching and information ethics, **Elizabeth Buchanan**, University of Wisconsin-Milwaukee

- Trust, including trust in individuals, content, systems, and the importance of different cultural perspectives, **Toni Carbo**, University of Pittsburgh
- Feminist and cross-cultural viewpoints and ethical applications in the areas of KM, IA and Usability Engineering, **Thomas Froehlich**, Kent State University
- Intellectual ethics and information ethics, **Dick Kawooya**, University of Wisconsin-Milwaukee
- Historical institutional aspects of information ethics, **Wallace Koehler**, Valdosta State University

2.3 Menzies Suite
Reflections on Three Leading Library Historians
Historical Perspectives SIG

Convener: **Mary Niles Maack**, University of California, Los Angeles
 This panel will explore Jesse Shera's historical writings and will discuss the contributions of Edward G. Holley and David Kaser, two important library historians a generation younger than Shera.

Panelists:
Robert S. Martin, Texas Woman's University
Stasa Milojevic, University of California, Los Angeles
John V. Richardson Jr., University of California, Los Angeles

2.4 Leonesa I
Juried Papers 4: When Users are Readers and
What's Sex Got to do With It?

Moderator: **Jami Jones**, East Carolina University
"Let's Talk About Sex": Professional Values, Disciplinary Research, and Young Adults.
 This presentation considers the need to reconcile professional values informing library services to young adults with empirical research in other disciplines that leads health professionals to encourage adolescents to practice abstinence.

Jennifer Burek Pierce, University of Iowa
Changing Readers: A Challenge for Research and Pedagogy
 Rapidly mutating media technologies mean that the context for recreational reading is changing. How should readers' advisors adapt to these changes? And what are the implications for LIS courses on reading, readers and readers' advisory services?
Margaret Mackey, University of Alberta

Wasting Time on Romances: Uncommon Ground in Reader Advisory Education and Professional Practice
 Describes results of a 2006-2007 mixed methods study that investigated reader advisory education in LIS schools and its affects on public librarians' attitudes toward romance fiction readers and their texts.
Denice Adkins, University of Missouri-Columbia
Linda Esser, University of Missouri-Columbia
Diane Velasquez, University of Missouri-Columbia

2.5 Leonesa III
Juried Papers 5: Meeting the Niche Needs

Moderator: **Lisa Given**, University of Alberta
Preparing Information Professionals for Careers in Knowledge Management and Competitive Intelligence: How Do Current LIS Programs Meet the Challenge?
 Using data collected from information professionals in KM and CI positions, this paper will describe how LIS programs might improve or augment the instruction provided in these increasingly important areas.
Lisl Zach, Louisiana State University

Autoethnography as a Research Method for the Reflective Professional
 Autoethnography combines personal narrative with cultural analysis and can increase understanding of professional problems of practice. This presentation describes strategies for writing and criteria for evaluating autoethnographies.
Dian Walster, Wayne State University.

Professionals in Transition: A Discussion of the Changing Roles and Needs in the Field of Visual Resources and Its Implication to LIS Education
 This paper reflects on the changing role of the visual resources (VR) professionals and discusses the results of the content analysis of VR related job announcements and a web-based survey of VR professionals. It is derived from the ongoing IMLS funded research.

Hemalata Iyer, University at Albany, SUNY.

3:30 – 4:00 *Leonesa Foyer*
Afternoon Break

4:00 – 5:30
CONCURRENT SESSION 3: PROGRAMS AND JURIED PAPERS

3.1 Eliza Anderson Amphitheater
Information Seeking Behaviors - The Who, What, Where, When, How And Why: Habits of Practice of K-12 Educators and Learners
 Convener: **Marcia A. Mardis**, Wayne State University
 Presents, explores, and discusses recent research in the area of information seeking behaviors of teachers and students in the U.S. education community through panelist presentations, audience discussion, and small group activities.

R. David Lankes, Syracuse University
Marcia A. Mardis, Wayne State University
Anne Perrault, University of South Carolina
Joyce Valenza, Springfield Township HS Library

3.2 *Leonesa II*

From Dissertation to Publication: Advice from The University of Washington Press New Faculty SIG

Convener: **Sharon McQueen**, University of Kentucky
 You've successfully defended your dissertation. Now what? Join The University of Washington Press as they discuss the publishing process and share suggestions on turning a dissertation into a publishable manuscript.

Panelists:

- **Pat Soden**, Director, The University of Washington Press
- **Michael Duckworth**, Executive Editor, The University of Washington Press
- **Jacqueline Ettinger**, Acquisitions Editor, The University of Washington Press
- **Lorri Hagman**, Acquisitions Editor, The University of Washington Press

3.3 *Menzies Suite*

Chat Reference Evaluation: Towards Habits of Reflective Practice

Convener: **Dave Harmeyer**, Azusa Pacific University
 Based on the concept that research informs practice, three chat reference transaction experts share practical research-based advice on educating future virtual reference library and information professionals.

John V. Richardson Jr., University of California, Los Angeles.

Lili Luo, University of North Carolina, Chapel Hill,

Dave Harmeyer, Azusa Pacific University.

3.4 *Leonesa I*

Juried Papers 6: Education, Practice & Identity in Context(s)

Moderator: **Jean Preer**, Indiana University-Indianapolis
Investigating the Gap between Full-time Educators' and Practitioners' Publications in Library & Information Science

The purpose of this study is to investigate the publication gap between LIS fulltime educators and practitioners. Using citation analysis, the differences of publication patterns between the groups were studied.

Yungrang Laura Cheng, Kent State University

Charlotte E. Ford, San Jose State University

Learning Librarianship: Scandinavian LIS Students Looking for Professional Identities

This paper investigates learning and identity development as individual and social practices. The theories presented are applied to, and illustrated by, empirical findings from focus group interviews with Swedish LIS students.

Jenny Hedman, University College of Borås & Gothenburg University

Camilla Moring, Royal School of Library and Information Science, Copenhagen, Denmark.

Library Science Education and East-West Relations: 40+ Years of Professional Education at the University of Hawaii'i.

Ralph Shaw established the Graduate School of Library Studies at the University of Hawaii in 1965. This paper explores the school's origins within the context of Cold War Hawaii.

Andrew B. Wertheimer, University of Hawaii'i

3.5 *Leonesa III*

From Advanced Degree Holders to Subject Specialists: Rethinking LIS Education for New Professionals

The program describes findings of an IMLS-funded study and engages participants in a discussion of curricular elements identified as important in the preparation of subject specialists for academic libraries.

Panelists:

- **Louise S. Robbins**, University of Wisconsin-Madison
- **Ming-Hsin "Phoebe" Chiu**, University of Wisconsin-Madison
- **Diane Barlow**, University of Maryland-College Park
- **Patricia H. Fisher**, University of Maryland-College Park

5:45 – 7:00 *Vesuvio Suite*

Past Presidents' Reception (by invitation only)

5:45 – 6:15 *Princessa II*

Doctoral Poster Session set-up

5:45 – 6:15 *Douglas Boardroom*

Doctoral Poster Judges Meeting

6:15 – 8:15 *Princessa II*

Doctoral Poster Judging

6:15 – 8:15

Doctoral Student Break

8:30 – 10:00 *Princessa Ballroom*

Doctoral Student Research Poster Session and Reception (cash bar)

Wednesday, January 17

WEDNESDAY OVERVIEW

- 7:30 a.m. – School Representatives’ Breakfast *Princessa II*
- 8:00 a.m. – Registration *Chatham*
- 8:00 a.m. – Placement Services *Chatham*
- 8:00 a.m. – Exhibits *Portland*
- 8:00 a.m. – SIG Session 1 *Princessa I*
- 9:00 a.m. – Reflecting on LIS and William Sullivan’s Three Apprenticeships in Professional Education *Leonesa Ballroom*
- 10:15 a.m. – Morning Break *Leonesa Foyer*
- 10:45 a.m. – SESSION 4: Concurrent Programs & Juried Papers
- 12:15 noon – Lunch Break
- 12:30 p.m. – SIG Session 2 *Princessa II*
- 1:30 p.m. – SESSION 5: Concurrent Programs & Juried Papers
- 3:00 p.m. – Afternoon Break *Leonesa Foyer*
- 3:30 p.m. – ALISE Business Meeting *Leonesa Ballroom*
- 6:30 p.m. – Awards Reception (cash bar) *Princessa Ballroom*

7:30 - 8:30 *Princessa II*
School Representatives’ Breakfast
 Sponsord by Proquest

8:00 - 8:45 *Princessa I*
SIG Session 1. Business, Planning, and Discussion Meetings

Join special interest groups for planning and informal discussion.

Conveners:

- Continuing Education, **Daniel Fuller**, California State University, San Jose
- Distance Education, **Michelle Kazmer**, The Florida State University and **Lydia Harris**, University of Washington
- Gender Issues, **Mary Niles Maack**, University of

California, Los Angeles and **Suzanne M. Stauffer**, Louisiana State University

- Information Ethics, **Toni Samek**, University of Alberta Preservation Education, TBA
- Research, **Ajit Pyati**, University of California, Los Angeles

9:00 - 10:15 *Leonesa Ballroom*

Reflecting on LIS and William Sullivan’s Three Apprenticeships in Professional Education

Organizers: ALISE Task Force on Best Teaching Practices in LIS and the Teaching Methods SIG

Moderator: **Jean Preer**, Indiana University, Indianapolis

Panelists will discuss the three apprenticeships in professional education described by keynote speaker William Sullivan in Work and Integrity and consider ways in which LIS educators can help students integrate intellectual content, practical skills, and ethical values.

Panelists:

Christine Pawley, University of Wisconsin-Madison

Bertram Bruce, University of Illinois at Urbana-Champaign

Toni Carbo, University of Pittsburgh

10:15 - 10:45 *Leonesa Foyer*

Morning Break

10:45 - 12:15

CONCURRENT SESSION 4: PROGRAMS AND JURIED PAPERS

4.1 *Eliza Anderson Amphitheater*

WISE Model of Collaboration: Improve Access, Increase Quality, Diversify Course Offerings

Moderator: **Linda C. Smith**, University of Illinois at Urbana-Champaign

Panelists will describe the WISE (Web-based Information Science Education) consortium “pillars” (quality, pedagogy, collaboration) and report assessment results based on the experience of students and faculty in the first two years of WISE.

Panelists:

Sue Alman, University of Pittsburgh

Bruce Kingma, Syracuse University

Rae-Anne Montague, University of Illinois at Urbana-Champaign

4.2 *Leonesa II*

Optimizing Teaching Experiences Abroad International Education SIG

Convener: **Lesley Farmer**, California State University, Long Beach

This program provides a rich opportunity for library educators to share their experiences in teaching abroad, and offer insights to optimize these situations.

Panelists:

John Agada, Emporia State University
Jamshid Beheshti, McGill University
Clara Chu, University of California, Los Angeles
Ann Curry, University of British Columbia
Lesley Farmer, California State University, Long Beach CA
Debbie Rabina, Pratt Institute
Ann Riedling, St. Leo University
John V. Richardson, Jr., University of California, Los Angeles
Cecilia L. Salvatore, Emporia State University

4.3 *Menzies Suite*

Juried Papers 7: Tools & Techniques for Reflective Learning

Moderator: **Toni Samek**, University of Alberta
Educators as Models and Mentors: Fostering Habits of Practice for Lifelong Learning through Information Literacy

This paper will discuss preliminary findings of a multi-case study of the information literacy practices of preservice educators and outline the application of the Diffusion of Innovation theory (Rogers, 2003) in the design of the study and its use as a framework for analysis.

Anne Marie Perrault, University of South Carolina

Reflective Practice in Archives Education: Journaling vs. Blogging

The presentation explores the applicability of blogging techniques to the “journaling” tool used traditionally in archives education. Students are expected to recognize everyday implications of theoretical problems, comment on those, ask for clarification, note the existence of multiple perspectives, or make personal observations. Journaling assured a sense of personal interaction, confidentiality, and privacy, as well as control over the disposal of those.

Judith Olah, University of Wyoming

Information Policy and Reflective Professionals: An Experiment in Pedagogy

An information policy seminar was redesigned to examine the impact of emerging technologies. Students utilize a wiki, a blog, and create vidcasts as they reflect on changing content and roles.

Mary Alice Ball, University of Indiana at Indianapolis

4.4 *Leonesa I*

Gender Issues in Information Needs and Services Gender SIG

Moderator: **Susan Searing**, University of Illinois at Urbana-Champaign

The papers to be presented have been selected from an upcoming thematic issue of Library Trends devoted to applying gender analysis to information access, provision and use.

Women and the Public Library: Using Technology, Using the Library

Dolores Fidishun, Penn State Great Valley School of Graduate Professional Studies

Top-Ten Community Actions that Library and Information Professionals Can Take in Their Academic Communities for People of Diverse Sexual Orientations and Gender Identities

Bharat Mehra, University of Tennessee

An Analysis of Gender, Net-Generation Children, and Computers in an Urban Public Library

Eliza T. Dresang, The Florida State University

Melissa Gross, The Florida State University

Leslie E. Holt, Library Consultant, St. Louis, MO

Women’s Studies Databases: A Critical Comparison of Three Databases for Core Journals in Women and Gender Studies

Cindy Ingold, University of Illinois at Urbana-Champaign

4.5 *Leonesa III*

The Next Generation of Instruction Librarians: Academic Libraries and the Teacher Training Experience

Moderator: **Jim Elmborg**, The University of Iowa
 A panel of librarians and LIS educators will share their experiences in developing and maintaining successful and sustainable programs designed to provide future librarians with a practical teaching experience.

Panelists:

Meghan Sitar, University of Texas Libraries

Jim Elmborg, The University of Iowa

Emily M. Okada, Indiana University, Bloomington

Lisa Janicke Hinchliffe, University of Illinois at Urbana-Champaign

Carrie Donovan, Indiana University

12:15 – 1:30

Lunch Break

12:30 – 1:15 *Princessa III*

SIG Session 2. Business, Planning, and Discussion Meetings

Join special interest groups for planning and informal discussion.

Conveners:

- New Faculty, **Sharon McQueen**, University of Kentucky
- Part Time/Adjunct Faculty **Daniel Callison**, University of Indiana at Indianapolis and **Mikel Breitenstein**, University of Indiana at Indianapolis
- Information Policy, **Sam Trosow**, University of Western Ontario
- International Library Education, **Lesley Farmer**, University of California, Long Beach
- Teaching Methods, **Jean Preer**, Indiana University-Indianapolis

- Youth Services, **Melissa Gross** and **Don Latham**, The Florida State University

1:30 – 3:00

CONCURRENT SESSION 5: PROGRAMS AND JURIED PAPERS

5.1 *Eliza Anderson Amphitheater*

Talking Online Education: Delivering a Synchronous SLIS Program in a Two-Way VoIP Context

Convener: **Steven L. MacCall**, The University of Alabama

The purpose of this panel is to present both data-driven evidence and anecdotal information concerning the benefits and challenges of supporting a full ALA-accredited MLIS program using this technology.

Panelists:

Steven L. MacCall, The University of Alabama
J. Allan Guenther, The University of Alabama
Elizabeth S. Aversa, The University of Alabama

5.2 *Leonesa II*

Juried Papers 8: Balance in the Curriculum?

Moderator: **Jim Elmborg**, The University of Iowa
Intellectual Freedom and LIS Education: Toward a Critical Pedagogy

This investigation examines pedagogical strategies for preparing librarians to manage censorship controversies. Course data and interviews suggest diverse methods for teaching about intellectual freedom and for balancing professional principles with library practice.

Loretta M. Gaffney, University of Illinois at Urbana-Champaign.

Ethics Education in the LIS Curriculum: Preparing Professionals for Practice

Based on a meta-analysis of published research related to ethics education in disciplines supporting professional education, the presentation will address the impact of ethical content in curricula on student learning, cognitive development, and ethical perception.

Mark Winston, University of North Carolina at Chapel Hill

Stephen Bahnaman, University of North Carolina at Chapel Hill

Formalizing Informal Approaches to Improve the Preparation of Professionals: The IRE Model Project

Athena helped to address the impending shortage of faculty to educate future librarians through recruitment modeling and curriculum enhancement. Here the PA model is adapted to professional master's education.

Kathleen M. Burnett, The Florida State University

Laurie J. Bonnici, Drexel University

5.3 *Menzies Suite*

Undergraduate Programs in LIS Schools: Reflections, Challenges & Opportunities

Moderator: **Robert Sandusky**, University of Tennessee

This panel will include brief presentations by representatives of several member schools, introducing their undergraduate programs and highlighting particular experiences, visions, successes, and challenges.

Panelists:

Susan Bonzi, Syracuse University

Lori Kendall, University of Illinois at Urbana-Champaign

Ronald L. Larsen, University of Pittsburgh

Gloria J. Leckie, University of Western Ontario

Darrell Burke, The Florida State University

Mia Liza A. Lustria, The Florida State University

Paul F. Marty, The Florida State University

5.4 *Leonesa I*

Recruiting and Educating the Next Generation of Youth Services Faculty
Youth Services SIG

Conveners:

Melissa Gross, The Florida State University

Don Latham, The Florida State University

Representatives from three schools that have received IMLS funding to recruit and educate doctoral students in youth services will discuss innovative strategies they have developed for recruitment and curriculum development.

Presenters:

Barbara Immroth and **Bill Lukenbill**, University of Texas at Austin

Marilyn Irwin, Indiana University, Indianapolis

Ann Weeks, University of Maryland

5.5 *Leonesa III*

Preparing Reflective Professionals: Systemizing the Proof, a Panel Discussion.

30-word mini-abstract: Examine strategies and issues around coalescing the various assessment systems to enable program improvement, while still meeting the data needs for the variety of accreditation systems.

Panelists:

Gail Dickinson, Old Dominion University

Karen O'Brien, ALA Office for Accreditation

Richard Rubin, Kent State University

3:00 – 3:30 *Leonesa Foyer*

Afternoon Break

3:30 – 5:15 *Leonesa Ballroom*

ALISE Business Meeting

6:30 – 8:00 *Princessa Ballroom*

All Conference & Awards Reception (cash bar)

Thursday, January 18

THURSDAY OVERVIEW

- 8:00 a.m. – Registration
- 12:00 noon *Chatham*
- 8:00 a.m. – Placement Services
- 12:00 noon *Chatham*
- 8:00 a.m. – Exhibits
- 12:00 noon *Portland*
- 8:00 a.m. – SIG Session 3
- 8:45 a.m. *Princessa I*
- 8:00 a.m. – Assistant/Associate Deans SIG
- 8:45 a.m. *Leonesa Ballroom*
- 9:00 a.m. – Supporting LIS Education
- 10:15 a.m. Through Practice *Leonesa Ballroom*
- 10:30 a.m. – SESSION 6: Concurrent
- 12:00 noon Programs & Juried Papers
- 11:00 a.m. – All Deans', Directors', and
- 12:00 noon Chairs' Meeting with Office for Accreditation Staff
- Princessa II*
- 12:15 p.m. – Closing Session
- 1:00 p.m. *Leonesa Ballroom*
- 2:00 p.m. – New Deans', Directors', and
- 3:00 p.m. Chairs' Meeting with Office for Accreditation Staff
- Princessa II*
- 2:00 p.m. – JELIS Editorial Board Meeting
- 3:00 p.m. *Blewett Suite*
- 2:00 p.m. – Executive Board Meeting With
- 3:00 p.m. Chairs and Conveners
- Stevens Suite*
- 3:30 p.m. – ALISE Board of Directors
- 6:30 p.m. Meeting
- Douglas Boardroom*

8:00 – 8:45 *Princessa I*
SIG Session 3. Business, Planning, and Discussion Meetings

Join special interest groups for planning and informal discussion.

Conveners:

- Archival/Records Management Education, **Lynne Chase**, Emporia State University
- Curriculum, **Patricia Montiel Overall**, University of Arizona
- Doctoral Students, **Diane Velasquez**, University of Missouri-Columbia

- Historical Perspectives, **Mary Niles Maack**, University of California, Los Angeles
- Multicultural, Ethnic and Humanistic Concerns, **Chris Hagar**, University of Illinois at Urbana-Champaign and **Nahyun Kwon**, University of South Florida
- Technical Services Education, **Elaine Yontz**, Valdosta State and **Barbara Marson**, East Carolina University

8:00 - 8:45 *Leonesa Ballroom*
Assistant/Associate Deans SIG Business Meeting
 Convener: **Michèle Cloonan**, Simmons College

9:00 – 10:15 *Leonesa Ballroom*
ALA President-Elect Platform on “Supporting LIS Education through Practice”

Loriene Roy, The University of Texas at Austin, 2006-2007 ALA President-Elect, will focus on three issues during her Presidential year: (1) Supporting LIS Education Through Practice; (2) Circle of Literacy; and (3) Workplace Wellness. During this one-hour program slot, she will introduce plans related to the issue of supporting LIS education through practice. She and members of her Task Force will invite questions, suggestions, and commentary.

Task Force members:

- Ismail Abdullahi**, North Carolina Central University
- Sara Albert**, American Library Association
- John Budd**, University of Missouri-Columbia
- Gary Geisler**, University of Texas at Austin
- Hector Marino**, American Library Association
- Dan O'Connor**, Rutgers, the State University of New Jersey
- Veronda Pitchford**, Urban Libraries Council
- A. Arro Smith**, University of Texas at Austin
- Elaine Yontz**, Valdosta State

10:30 - 12:00
CONCURRENT SESSION 6: PROGRAMS AND JURIED PAPERS

6.1 *Eliza Anderson Amphitheater*
Interdisciplinary and Multidisciplinary Research: Enhancing Diversity in LIS Scholarship Research Methods SIG

Convener: **Ajit K. Pyati**, University of California, Los Angeles
 Explore interdisciplinary and multidisciplinary research techniques and philosophies from a diverse array of disciplines outside of LIS and the challenges and opportunities that these different research traditions present for LIS.

Panelists:

- Anne Gilliland**, University of California, Los Angeles
- Ajit K. Pyati**, University of California, Los Angeles
- Catherine Ross**, The University of Western Ontario
- Wayne Wiegand**, The Florida State University
- Kelvin White**, University of California, Los Angeles

6.2 *Leonesa II*

OCLC/ALISE Grant Papers

Moderator: **Lynn Connaway**, OCLC Online Computer Library Center, Inc.

The 2006 grant recipients will report on the progress and results of their research. There will be time for discussion of the research and to address specific questions about the OCLC/ALISE LISRGP.

Citation Analysis of Library and Information Science Faculty Publications: ISI Databases and Beyond

Lokman Meho and **Kiduk Yang**, Indiana University

Assessment of Library Support Services for Distance Learners: A Case Study of the University of Nairobi, Kenya

Joyce Kanini Mbwesa, University of Nairobi

The Return on Investment of Collaborative Virtual Reference Service

Jeffrey Pomerantz, University of North Carolina at Chapel Hill

The Use of Collaborative Tagging in Public Library Catalogues

Louise Spiteri, Dalhousie University

6.3 *Menzies Suite*

Now I have the Assistant Professor Position: What are the Expectations while Working towards Tenure?

Doctoral SIG

Convener: **Diane Velasquez**, University of Missouri-Columbia

Provides a forum for speakers to talk briefly about their experiences while working towards tenure with the intent of informing doctoral students/candidates who are in the interview stage about the tenure process.

Panelists:

Denice Adkins, University of Missouri-Columbia

Elizabeth Aversa, University of Alabama

Belinda Boon, Kent State University

Jennifer Burek Pierce, University of Iowa

Andrew Wertheimer, University of Hawai'i

6.4 *Leonesa I*

Three Perspectives on the Importance of Reflection in the Classroom and Beyond

Convener: **Linda Z. Cooper**, Pratt Institute

This panel will address reflection in teaching and learning and its impact on students and professionals. Perspectives and examples of teaching methods will be presented by faculty members who incorporate reflection into teaching practice.

Panelists:

Linda Z. Cooper, Pratt Institute

Debbie Rabina, Pratt Institute

David Walczyk, Pratt Institute

6.5 *Leonesa III*

Juried Papers 9: We Recruit!

Moderator: **Mary Alice Ball**, Indiana University, Indianapolis

Library Access Midwest Program (LAMP): Developing a Regional Recruitment Alliance for Library and Information Science

LIS Access Midwest Program (LAMP) is a regional initiative aiming to increase representation of members of statistically and historically underrepresented groups through proactive recruitment, enrichment, and retention activities.

Rae-Anne Montague, University of Illinois at Urbana-Champaign

André Brock Jr., University of Illinois at Urbana-Champaign.

Recruiting for a reflective profession

Employers are demanding reflective professionals. Recruitment practices impact student perceptions of information fields. Our paper analyses recruitment materials from six countries and suggests educator-employer collaboration for pushing the fields forward.

Fiona A. Black, Dalhousie University.

Elizabeth Kelley, Dalhousie University.

11:00 – 12:00 *Princessa II*

All Deans', Directors', and Chairs' Meeting with Office for Accreditation Staff

Convener: **Karen O'Brien**, ALA Office for Accreditation

12:15 – 1:00 *Leonesa Ballroom*

Closing Session: Conference Re-cap

■ Sleepless at ALISE in Seattle, **Julie Hersberger**, University of North Carolina-Greensboro

■ Remarks **ALISE President Connie Van Fleet**, University of Oklahoma

1:00 – 2:00

Lunch Break

2:00 – 3:00 *Princessa II*

New Deans', Directors', and Chairs' Meeting with Office for Accreditation Staff

Convener: **Karen O'Brien**, ALA Office for Accreditation

2:00 – 3:00 *Blewett Suite*

JELIS Editorial Board Meeting

2:00 – 3:00 *Stevens Suite*

Executive Board Meeting With Chairs and Conveners

3:30 – 6:30 *Douglas Boardroom*

ALISE Board of Directors Meeting 3

ALISE Raffle

ALISE will be hosting a raffle this year to support the 2007 ALISE Awards and Honors.

2008 Conference Raffle

Grand Prize:

A five-night stay at the Sheraton Philadelphia City Center Hotel. This hotel stay is to be used for the 2008 ALISE Annual Conference in Philadelphia, PA. Estimated cost of this prize is \$800. Raffle tickets will be sold for \$25.

ALA Editions Raffle

Prize:

Five books published by ALA Editions. Books included are:

- *Information Literacy Assessment: Standards-Based Tools and Assignments* by Teresa Y. Neely
- *How Libraries and librarians help: A Guide to Identifying User-Centered Outcomes* by Joan C. Durrance and Karen E. Fisher with Marian Couch Hinton
- *Web-Based instruction: A Guide for Libraries*, Second Edition by Susan Sharpless Smith
- *Teaching Information Literacy: 35 Practical Standards-based Exercises for College Students* by Joanne M. Burkhardt, Mary C. MacDonald and Andree Rathemacher
- *Creating the One-shot Library Workshop: A Step-by-Step Guide* by Jerilyn Veldof

Raffle tickets will be sold for \$10. Buy your raffle tickets at the ALISE registration desk located at the Chatham room.

ALISE 2007 Award Winners

Teaching and Service Awards

Teaching Excellence in the Field of Library and Information Science Education

Betsy Hearne, University of Illinois at Urbana-Champaign
Diana Bilal, University of Tennessee

Professional Contribution to Library and Information Science Education

Brooke E. Sheldon, San Jose State University

Service to the Association for Library and Information Science Education

Toni Carbo, University of Pittsburgh

2006 Doctoral Students to ALISE

(sponsored by Libraries Unlimited)

Maria Soudan, University of Michigan
Rachel Fleming-May, University of Alabama

Research Awards

Bohdan S. Wynar / ALISE Research Paper Competition

(sponsored by Libraries Unlimited)

Charles Hildreth, Long Island University, and **Selena Aytac**, Long Island University

Eugene Garfield - ALISE Doctoral Dissertation Award

Kate Williams, Dominican University (Dissertation completed at Michigan University)

Dialog/ALISE Methodology Paper

Lokman Meho, Indiana University

ALISE Research Grant

Eileen Abels, University of Maryland; **Denise Agosto**, Drexel University; and **Lorri Mon**, Florida State University

OCLC-ALISE Library and Information Science Research Grant

Melissa Gross and **Don Latham**, Florida State University

Thanks to our Sponsors

Confirmed as of January 5, 2007

President's Circle (\$10,001+)
OCLC

Associate (\$1,501 - \$5,000)
CSA
The H. W. Wilson Foundation
Miller Analogies Test/Harcourt Assessment
Neal-Schuman Publishers, Inc.
Proquest

Supporter (\$751 - \$1,500)
Elsevier
Libraries Unlimited/Greenwood Publishing Group
Scarecrow Press

Friend (\$100 - \$750)
ALA Editions
Bound to Stay Bound
The University of Chicago Press

Doctoral Student Reception Sponsoring Schools

Confirmed as of January 2, 2007

University of Alberta
University of Alabama
University of British Columbia
Dalhousie University
Dominican University
Drexel University
Emoria State University
The Florida State University
University of Illinois at Urbana-Champaign
University of Kentucky
Louisiana State University
University of Maryland
University of Michigan
University of North Carolina at Chapel Hill
Pratt Institute
San Jose State University
Simmons College
Southern Connecticut State University
St. John's University
Syracuse University
University of Tennessee
University of Texas
University of Wisconsin - Madison
University of Washington
Wayne State University

ALISE 2006 Board of Directors

President

John Budd, University of Missouri - Columbia

Vice-President / President-Elect

Connie Van Fleet, University of Oklahoma

Past President

Ken Haycock, San Jose State University

Director of Finance and Secretary-Treasurer

Lisa Given, University of Alberta

Director for Special Interest Groups

Julie Hersberger, University of North Carolina - Greensboro

Director for Membership Services

Gloria Leckie, University of Western Ontario

Director for External Relations

Heidi Julien, University of Alberta

ALISE Staff

Kathleen Combs, Executive Director

Yolanda Peterson, Assistant

Kelly Anderson, IT Associate

2007 Conference Program Planning Committee

Coordinating Chairs

Melissa Gross, Florida State University

Michele Besant, University of Wisconsin-Madison

Committee Members:

John Budd, University of Missouri - Columbia

Andrew Dillon, University of Texas at Austin

Julie Hersberger, University of North Carolina-Greensboro

Lynne McKechnie, University of Western Ontario

Toni Samek, University of Alberta

Connie Van Fleet, University of Oklahoma

Mark Winston, University of North Carolina at Chapel Hill

Diane Velasquez, University of Missouri - Columbia

Resolutions

Written copies of all resolutions, including resolutions contained in committee reports, must be given to the membership before they are to be presented to that body for action. To permit this, text must be submitted to the Governance Committee 24 hours in advance of presentation. A resolution that has fiscal implications must be submitted to the President as well as the Governance Committee 24 hours before it is to be voted on so that the Budget Committee can provide information on fiscal implications.

Resolution approved January 13, 1979, limits resolutions to statements on substantive matters relating to library education and the profession of librarianship to be voted on by membership.

Governance Committee

Ken Haycock, San Jose State University (chair)

Elizabeth Aversa, University of Alabama

Prudence Dalrymple, Dominican University

June Lester, University of Oklahoma

Louise Robbins, University of Wisconsin-Madison

Vision

By 2008, ALISE will be the visionary organization in Library and Information Science education. The Association will be known for its unique purpose, build its strength and communicate that strength through vision, voice and visibility.

Mission

ALISE promotes excellence in research, teaching and service for Library and Information Science educators through leadership, collaboration, advocacy and dissemination of research.

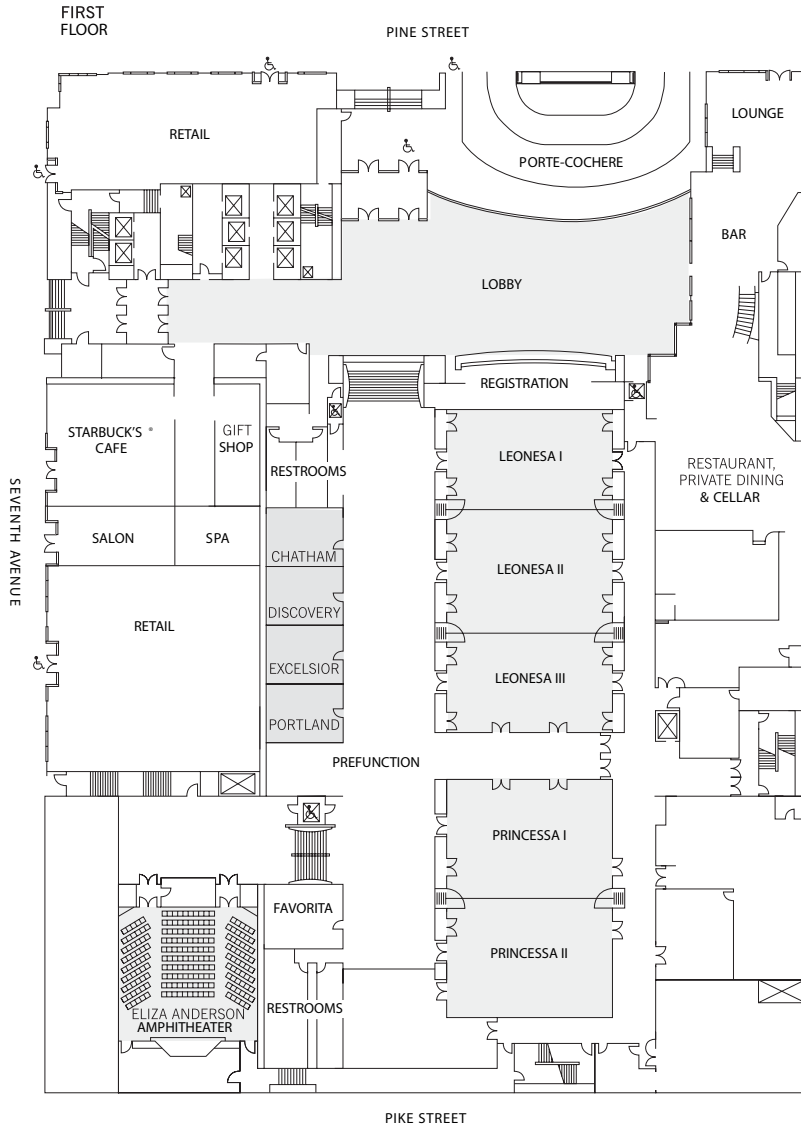
Enduring Purpose

ALISE promotes research that informs the scholarship of teaching and learning for Library and Information Science, enabling members to integrate research into teaching and learning.

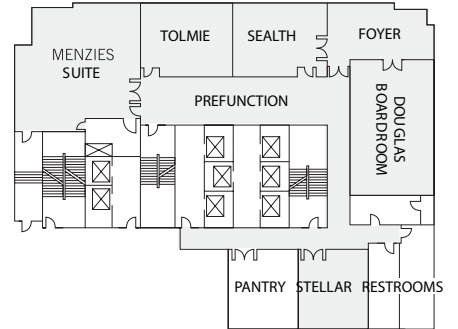
Strategic Directions (2004-2006)

1. Achieve the Association's Unique Purpose through focus on the scholarship of teaching and learning and the enhancement of research;
2. Promote the Association's Unique Purpose through marketing and communication of the ALISE vision;
3. Ensure Membership Growth to Develop the Association's Unique Purpose through strategic development of new special interest groups and targeted growth;
4. Enhance Revenue Streams to Extend the Association's Unique Purpose, through planned development and advancement and new initiatives;
5. Restructure to Achieve the Association's Unique Purpose, through a realignment of Board responsibilities, restructuring and accountability of committees and translation of this strategic plan into specific, measurable, active, relevant and timed objectives.

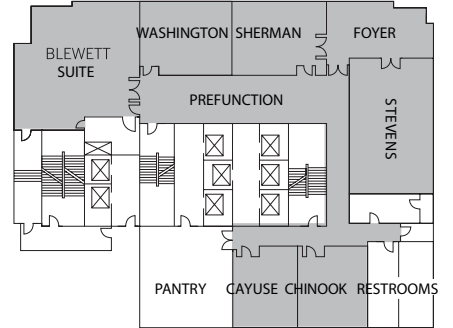
Floor Map: Grand Hyatt Seattle



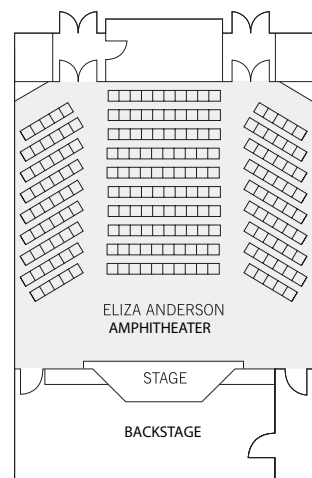
SIXTH FLOOR



SEVENTH FLOOR



THEATER-BALLROOM LEVEL



Notes

Notes

PHILADELPHIA in 2008

January 8-11, 2008
Sheraton Philadelphia City Center Hotel

Community Engagement: Integrating Learning, Research, and Practice

The 2008 ALISE Annual Conference focuses on community engagement in library and information science, raising complex issues about the role of institutions in society, and bringing new forms of collaboration such as service-learning and community-based action research to the forefront:

- How can practitioners working in the information professions collaborate with local residents and organizations in community-based health, arts, environmental, literacy, civic, and youth development initiatives?
- How can students and faculty connect their classrooms with community settings to improve their learning?
- How do researchers engage with communities in framing studies of local knowledge creation, mobilization, and impact?
- What theories and methods guide community engagement across the three spheres of learning, research and practice, and how should professionals enact their role in communities to encompass learning and research as integral to their work practice?

With community engagement as its theme, ALISE 2008 invites a broad spectrum of approaches from LIS educators and participants from disciplines beyond LIS.



ASSOCIATION FOR LIBRARY AND
INFORMATION SCIENCE EDUCATION

ALISE
65 East Wacker Place, Suite 1900
Chicago, IL 60601-7246
312-795-0996
312-419-8950 (fax)
contact@alise.org